

Visual Guide to the Relaxed Performances

Cork Opera House's 2025 Pantomime

Aladdin

Wednesday 10 December 2024 at 4pm
Thursday 8 January 2025 at 11am (Schools)



170 YEARS IN THE SPOTLIGHT - CORK OPERA HOUSE TAKE A BOW!

Introduction

Thank you so much for coming to see the Relaxed Performance of our Pantomime *Aladdin* at Cork Opera House. We are very excited to welcome you to our venue.

This visual guide will give you some information about getting to Cork Opera House; the building and its facilities, the show and characters, and what to expect throughout your time at Cork Opera House.

If you have any questions about anything in this document, or if we have missed anything, please feel free to ask! You can call our Box Office on 021-427 0022 or email Daniel at dcremin@corkoperahouse.ie



Contents

1. How to get to Cork Opera House	3
2. The Building and its Facilities	4
2.1 Ground Floor Foyer including the Café, Sweet Shop, Toy Stand and Box Office	4
2.2 First Floor	6
2.3 Second Floor	7
2.4 Auditorium.....	7
2.5 Staff	8
2.6 Toilets	8
2.7 Wheelchair Access	9
3. The Show	10
What is a Relaxed Performance?	10
What is a Pantomime?	11
The Story	11
The Set	11
The Songs	12
The Characters	13
4. Conclusion	16
5. Informative Video	16

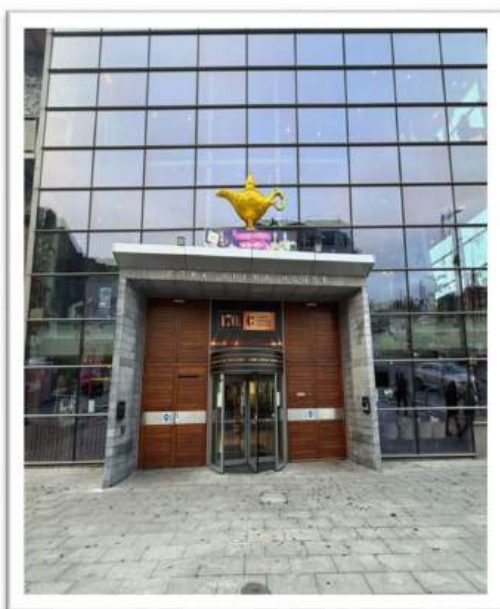
1. How to get to Cork Opera House



Cork Opera House is on Emmet Place, right next to the Crawford Art Gallery, just a few minutes' walk from Patrick's Street in Cork city centre.

Bus:

You can take any route that stops on Patrick's Street and walk less than 5 minutes to the venue.



For non-city buses, you can take a bus to the Bus Station on Parnell Place and walk 6 minutes to the venue.

Train:

Take the train to Kent Station, Cork. From there, you can take the 205 bus to Patrick's Street and walk less than 5 minutes to the venue; or you can walk 15 minutes from the Train Station to the venue.

Parking:

The closest parking to the venue is Q-Park on Carroll's Quay. Open 24-hours, it's located just across the bridge – only a 2-minute walk to Cork Opera House's front door.

To avail of a 25% discount on your parking, you need to book your parking online before visiting the Opera House. Go to <https://www.q-park.ie/en-gb/cities/cork/carrolls-quay/> and use promo code OPERA22 to avail of a 25% discount on your parking.

Please note: Discounts can't be applied to parking tickets purchased on site in Q-Park.

2. The Building and its Facilities:

Ground Floor Foyer including the Café, Sweet Shop, Toy Stand and Box Office

When you enter Cork Opera House through the revolving door, you will arrive at the Foyer. There will be staff and ushers on hand in the Foyer to greet you and help you find your way through the building.

The Foyer has a set of stairs in the middle that leads up to the 1st floor and the bar.

To the right of these stairs is the Box Office. This is where you can collect your tickets if you haven't collected them beforehand. To the right of the Box Office is a set of doors that leads you to the Auditorium, toilets, and more stairs to the 1st floor. A member of staff will be waiting in the Auditorium to help you find your seat.



A lift is located through the doors on the left side of the Foyer. Male Toilets are also through that same door and up one flight of stairs. To the right of the Foyer are doors (pictured above) leading to the Female Toilets

To the left of the stairs is the Cafe. The Cafe sells sweets, crisps, and other snacks, as well as drinks such as tea or coffee. You might be able to smell coffee from here. To the left of the Cafe is a set of doors that leads to the left side of the Auditorium, as well as more toilets and stairs to the 1st floor. A member of staff will be waiting in the Auditorium to help you find your seat.



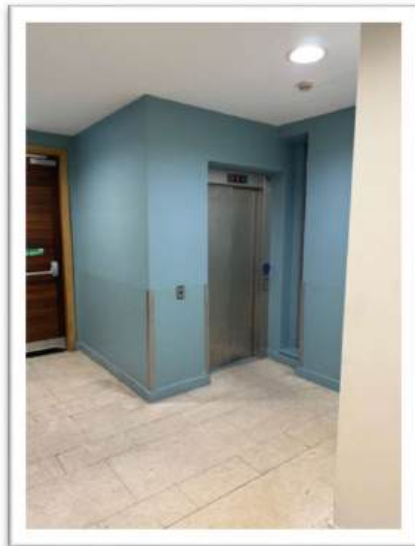
There will be a toy stand to the left of the doors by the window, where you can buy Panto toys.



There is a sweet shop to the right of the main entrance.



If you need to use the elevator, you should go through the double doors to the left of the Cafe and turn left. This will lead you to the elevator. If you are going to the Dress Circle then you should select the 1st floor button in the elevator. The elevator will bring you to the 1st floor.



First Floor: Access to Dress Circle (Seating in Auditorium), 1st Floor Bar, and male and female toilets.

The 1st floor has access to the Dress Circle, the Bar, and two sets of toilets (male and female). You can access the 1st floor by taking the stairs from the foyer or by taking the elevator.

When you leave the elevator on the 1st floor, the double doors on your right will lead you to the bar where you can go to relax, and the doors straight ahead and up the stairs will lead you to the auditorium. An usher will be waiting to help you find your seat.

Access to the Bar on the 1st floor.



Second Floor: Access to female, and wheelchair accessible toilets, Blue Angel Bar and Corporate Boxes (Seating in Auditorium).

The second floor is the top floor of the building. To get to the second floor, you can take the stairs from the first or ground floor, or you can take the elevator on the left of the building.

From here, you can access female and wheelchair accessible toilets, the Blue Angel Bar and all of the corporate boxes in the auditorium.

Access to the Blue Angel Bar on the 2nd floor, and access to the Corporate Boxes.



Auditorium

The auditorium is where you will go to watch the show. When you book your tickets, you will be told where you are sitting. Your seat will be written on the ticket. It will say whether you are in the Stalls (ground floor), Dress Circle (1st floor) or Corporate Boxes (2nd Floor). It will also say which row you are in (assigned by letters) and which seat in the row (assigned by a number). There will be ushers at each entrance to the auditorium who will help you find your seat.



Staff

Cork Opera House staff will be present on the day to show you to your seats and help with anything they can. They will be wearing all black, and a Cork Opera House staff lanyard with the badge 'Staff' attached, as pictured here.



Toilets

There are 6 different sets of toilets in Cork Opera House - 2 on the ground floor, 2 on the 1st floor, and 2 on the 2nd floor.

On the ground floor: When you leave the foyer through the door on the right (beside the Box Office), the female toilets will be on your left, beside the entrance to the right side of the auditorium.



When you leave the foyer through the door on the left (beside the Cafe), there will be a door to the male toilets on your right, beside the entrance to the left side of the auditorium.



On the first floor: When you go up the right stairs to the 1st floor, the male toilets will be on your right, beside the right entrance to the Dress Circle seating in the auditorium. When you go up the left stairs to the 1st floor, the female toilets are on your left beside the left entrance to the Dress Circle in the auditorium.



Wheelchair Accessibility

If you or someone you're visiting with uses a wheelchair, we have a wheelchair lift to make our venue more accessible. You can phone ahead to let our staff know, or you can let them know at the Box Office when you arrive, and they will assist with the lift in the foyer to give access to the Stalls, or they will give access to the Dress Circle through the Blue Angel Bar on the 2nd floor using the elevator.

The Show

What is a relaxed performance?

A relaxed performance is a version of a show in which a lot of the elements are adjusted to be more comfortable for everyone in the audience. The aim of this is that people with sensory processing differences will be more comfortable visiting our venue and engaging with our productions.

At Cork Opera House, we are making the following adjustments for the relaxed performance of our Pantomime *Aladdin*.

Our aim is to create a judgement-free and fun experience for all the family, and to do so we are putting the following in place:

- We will open Cork Opera House two hours before the show begins for families or groups that wish to arrive early and take time to become comfortable with the venue and surroundings.
- At the beginning of the show, our MC will welcome everyone and give an introduction to remind the audience that this is a relaxed performance, and therefore audience members are welcome to move around freely and make as much noise as they would like.
- Our technical team will be adjusting the sound and lighting to reduce sensory stimuli and make the performance more comfortable for autistic children.
- We encourage parents to bring their children's ear defenders, however, we will also have some onsite for anyone that may need them.
- The lights in the auditorium will remain on a low level throughout the performance.
- The auditorium will be a space where children can move around, make noise and enjoy themselves during the performance. We have reduced our capacity to 50% for this show to make this a more comfortable and enjoyable experience for everyone.
- The show will have two acts, with an interval in between. This interval will be twenty minutes long, and families are welcome to leave or remain in the auditorium during this time.
- If a child needs to leave the auditorium during the show, that's no problem. We will have areas where children can relax during the show in our bars. People will be permitted to re-enter at any time during the show.
- Sensory safe tools are permitted in auditorium, including (but not limited to) fidget spinners and sensory toys.
- Service dogs are also welcome to come see the show. All dogs must remain with a handler for the duration of the show. We will have water stations available for dogs on site.
- The hand dryers in the bathrooms will be turned off for the duration of the show.
- Soap dispensers in the bathrooms will contain soap that has a natural scent.
- We have worked with the autistic community and parents/carers to tailor our show and the Panto experience. Any and all feedback is welcome, and we will contact patrons after the show to try and improve the experience for next year. We also welcome all questions in advance of the show, and we will do our best to respond to any queries as quickly as possible.

What is a Pantomime?

Pantomime is a form of musical comedy that includes acting, singing, dancing and slapstick comedy. They are often called 'Panto'. The stories are often fairy tales with modern twists, modern songs and references to modern culture and events. During a Pantomime, the actors will encourage the audience to respond to them and participate. They might talk to the audience, and ask questions like 'where is Nanny Nellie?', and the audience might respond with 'she's behind you!'. This is fun for some people, but not for everyone, so you do not have to respond or participate if you're not comfortable.

The Story

The Cork Opera House Pantomime will include lots of performers from Cork, and lots of jokes and references to Cork. That said, it is fun for everyone - even if you're not from Cork! This year's show is based on the story of Aladdin.

In the Cork Opera House version of *Aladdin*, it follows a young man who discovers a magic lamp in a far-off cave containing a Genie who can grant wishes. With the help of the Genie, Aladdin tries to improve his life and win the heart of Princess Jasmine, while the villain Abanazar attempts to steal the lamp to become all powerful. Throughout the show your favourite Panto Dame and Aladdin's grandmother Nanny Nellie guides you through the story alongside Aladdin's sister Wishee Washee.

The Set

The 'set' is the scenery, furniture and background used during a show. The set contains lots of different pieces, and is carefully designed by a team of set designers. When you enter auditorium, there will be a curtain in front hiding the stage. When the show starts, this curtain will lift and you'll be able to see the set behind the curtain.

During the show, pieces of the set might move around so that the characters look like they're in different places. For example, when Aladdin is in the Cave or Abanazar is in his evil lair.

The Songs

There are a number of different songs in the Pantomime that add to the storyline. Some of these songs are performed the same as the original, and some will have the words changed to match the storyline. During these songs, there'll be dancing and singing and lots of fun. If you'd like to sing, dance or clap along, then you are more than welcome to do so. Equally, if you'd like to sit and watch, that is more than welcome also. This is a list of some of the songs performed in our 'Aladdin' Pantomime; in case you would like to listen to them at home:

- Arabian Nights - Aladdin
- Azizam – Ed Sheeran
- Nellie The Elephant
- I Want The Good Times Back – The Little Mermaid
- Together At Last – Annie The Musical
- Manchild – Sabrina Carpenter
- Rain on The Roof – Paddington 2
- Hawaiian Rollercoaster Ride – Lilo & Stitch
- Surfin' USA – The Beach Boys
- Let Me Entertain You – Robbie Williams
- Rock DJ – Robbie Williams
- Golden – Kpop Demon Hunters
- Friend Like Me – Aladdin
- Killeagh - Kingfishr
- Soda Pop – Kpop Demon Hunters
- Splish Splash – Bobby Darin
- Ordinary – Alex Warren
- Abracadabra – Lady Gaga
- Sapphire – Ed Sheeran
- Believe - Cher
- Ain't No Mountain – Marvin Gaye & Tammi Terrell

The Characters

There are 6 main characters in our Panto 'Aladdin'. These are pictures of them in their costumes.



Aladdin *played by Anthony Sahota*

Aladdin is played by Anthony Sahota. Aladdin is a young boy with a big dream and uses the magic lamp to find his true love.

In this photograph, Anthony is wearing beige trousers and a colourful sleeveless vest.

Princess Jasmine *played by Issy Khogali*

Princess Jasmine is played by Issy Khogali. Jasmine is the princess of our Panto, strong willed and determined. She is hesitant of Aladdin at first but slowly opens up to a whole new world.

In this photograph, Issy is wearing a turquoise costume with a golden belt.





Abanazar *played by Micheal Grennell*

Abanazar is the evil character who wants to take the lamp for himself and kidnaps Princess Jasmine to do so. He is played by Michael Grennell, who in real life is a really lovely person but pretends to be mean for the show.

In this photograph, Michael is wearing a large blue, green, purple and gold cape. He also has a large blue and gold hat on.

Nanny Nellie *played by Frank Mackey*

Nanny Nellie comes back for our Panto every year, and she is so happy you have come to visit. Nanny Nellie looks after Aladdin and Wishee Washee, helping them throughout the story. Nanny Nellie is also a bit of a joker and loves to have some fun with the audience. She might talk to the audience and ask you to join in with her - but don't worry, you don't have to if you're not comfortable.

Nanny Nellie is played by Frank Mackey. Frank is dressed up in a colourful dress full of pinks, yellows, purples, and reds. In this photograph, Frank is also holding the magic lamp.



The Genie *played by Callum Martin*

The Genie is played by Callum Martin. The Genie lives inside the magic lamp and will grant three wishes to anyone who rubs the side of it.

In this photograph, Callum is wearing a red and gold top with a gold belt and colourful trousers. He also has a bit of pink in his hair.



Wishee Washee

played by Alison McCormack

Wishee Washee is Aladdin's sister and works with their grandmother Nanny Nellie. Alison McCormack plays this part in our show.

In this photograph, Alison is wearing a colourful matching jacket and trousers with bows in her hair.

Fairy T *played by Thérèse O'Sullivan*

This is Fairy T! She will be here to welcome you to Cork Opera House and introduce you to our Pantomime 'Aladdin'. Throughout the show, Fairy T will tell you all anything you need to know. She'll introduce the show, the characters, and she'll tell you when it's time for a quick break.

In this photo, her costume is made up of a sparkly green, gold, and white dress with white and blue flowers. She's wearing a blonde wig with a gold and blue crown, and she's holding a gold wand.



Conclusion

We are really looking forward to welcoming you to Cork Opera House for the Relaxed Performance of our Pantomime 'Aladdin'.

If you have any further questions, you are more than welcome to contact us and we will get back to you as soon as possible.

You can phone our Box Office using the number 021 427 0022 or email Daniel if you have any questions (dcremin@corkoperahouse.ie).

Informational Video

We have created an informational video to go along with this visual guide with actor Thérèse O'Sullivan. you can access this video through the following link:

https://www.youtube.com/watch?v=qxvtyZ4Vj_0